

# City of Jeffersonville

## Sidewalk Master Plan 2019

March 18, 2019



City of Jeffersonville  
500 Quartermaster Court  
Jeffersonville, IN

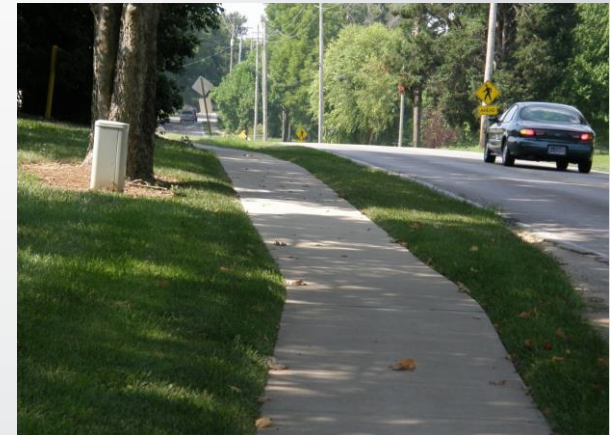


**Jacobi, Toombs & Lanz, Inc.**  
*Consulting Engineers & Land Surveyors*

1829 E. Spring Street, Ste 201  
New Albany, IN 47150  
812/945-9585co

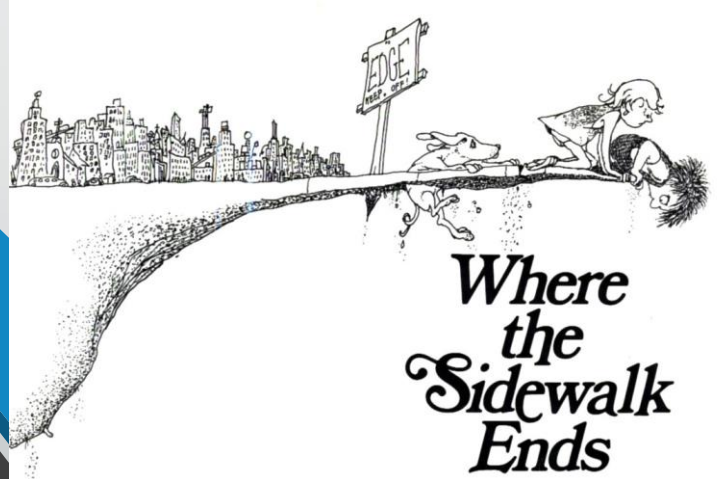
# Introduction

1. Purpose of a Sidewalk Master Plan
2. Sidewalk Master Plan 2011: Overview, Proposals, and Accomplishments
3. Jeffersonville: 2011 vs. 2019
4. Moving Forward: Relevant Plans and Studies for future growth
5. Updating the Jeffersonville Master Plan for 2019
6. Prioritizing projects



# 1. Purpose of a Sidewalk Master Plan

1. To promote and provide safe and convenient walking routes throughout the City.
2. To encourage walking as a viable mode of transportation by providing connections between homes, businesses, schools and recreation.
3. By identifying missing links in the existing sidewalk network.



# 1. Purpose of a Sidewalk Master Plan

- 4. By prioritizing proposed new sidewalk construction projects.
- 5. By identifying potential projects that could be constructed as part of private development.
- 6. By estimating design and construction costs for future budgeting and prioritizing projects.
- 7. By identifying potential funding sources outside City budgets.



## 2. Sidewalk Master Plan 2011

1. Proposed 24 new sidewalk projects.
2. Total estimated costs: \$7 million.
3. Identified major projects and trends in Jeffersonville that could impact pedestrian travel throughout the City.
4. Identified programs such as Smart Growth America and the Americans with Disabilities Act (ADA) which drive and influence pedestrian infrastructure design, safety, and project prioritization.





## 2. Sidewalk Master Plan 2011

1. Completed or partially completed projects: 12
2. Incorporated into road projects: 4
3. Removed from list: 3
4. Proposed but not completed projects: 6



## 2. Sidewalk Master Plan 2011 Completed Projects

- Allison Lane
- Utica Pike
- Hopkins Lane
- Harrison Avenue
- East Maple Street
- Howard Avenue
- Ewing Lane
- Vissing Park Road.



## 2. Sidewalk Master Plan 2011 – City Snapshot

1. Two different styles of development: Downtown with mixed use and outlying large residential subdivisions.
2. Large subdivisions on the far edge with no pedestrian connections to each other or the City.
3. City essentially ended at Eastbrook Boulevard and Vissing Park Road.
4. New development emerging along Veterans Parkway.
5. The only pedestrian connection to Louisville was via the Clark Memorial Bridge.





### 3. Jeffersonville: 2011 vs. 2019

- ❖ 2035 Comprehensive Plan – completed Fall of 2015

- ❖ Existing Bicycle and Pedestrians Facilities

- ❖ Big Four Pedestrian Bridge

- ❖ Ohio River Greenway

- ❖ Jeffersonville Bicycle and Ped Plan

- ❖ Transportation Plan includes a number of recommendations to encourage pedestrian and bicycle facilities in transportation projects including:

- ❖ 10<sup>th</sup> Street Revitalization

- ❖ Charlestown Pike

- ❖ 8<sup>th</sup> Street

- ❖ Main Street



### 3. Jeffersonville: 2011 vs. 2019

- ❖ Veterans Parkway/Holmans Lane Improvements
- ❖ Hamburg Pike
- ❖ 10<sup>th</sup> Street revitalization



### 3. Jeffersonville: 2011 vs. 2019 – Commercial & Residential

- ❖ Jefferson Ridge & Jeffersonville Commons, Gateway Crossing, Bridgeport Commons
- ❖ River Ridge Commerce Center continued growth



### 3. Jeffersonville: 2011 vs. 2019- Recreation & Culture

- ❖ The Big Four® Bridge and Big Four Station Park
- ❖ NoCo Arts & Cultural District – North of Court Avenue





### 3. Jeffersonville: 2011 vs. 2019- Recreation & Educational



- ❖ Fisherman's Wharf at RiverStage and Terrace Lawn
- ❖ Ohio River Greenway
- ❖ Jeffersonville Tree Walk

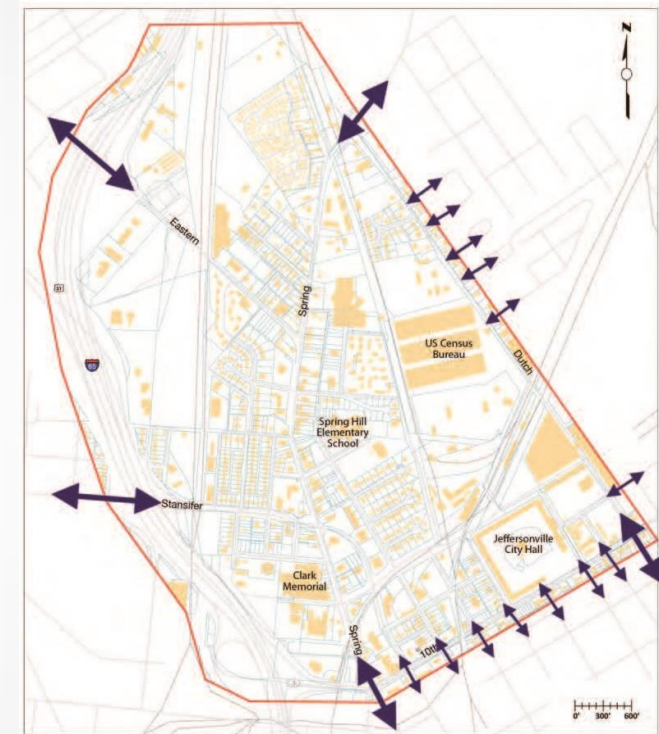
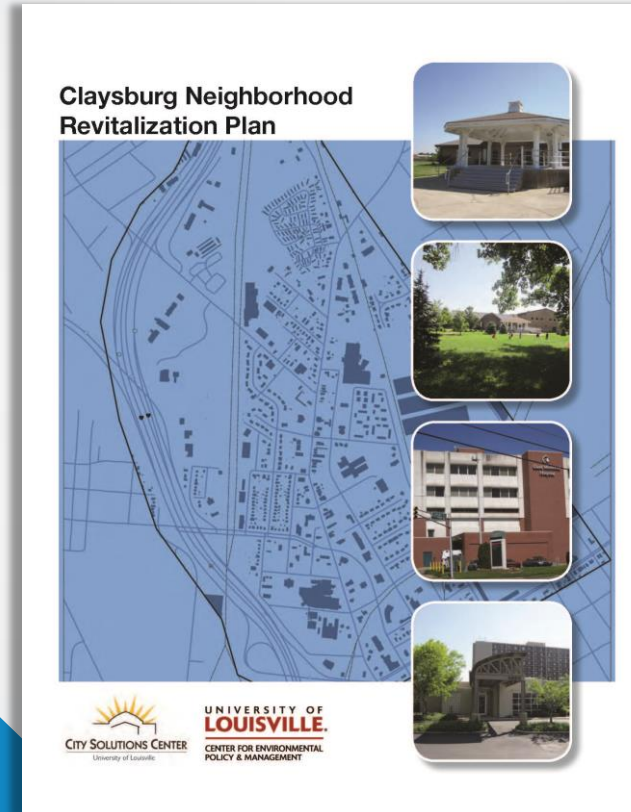


- ❖ Vissing Park
- ❖ Woehrle Athletic Complex
- ❖ Chapel Lake Park



## 4. Jeffersonville: Moving Forward

### ❖ Claysburg Neighborhood Revitalization Plan – Completed 2012



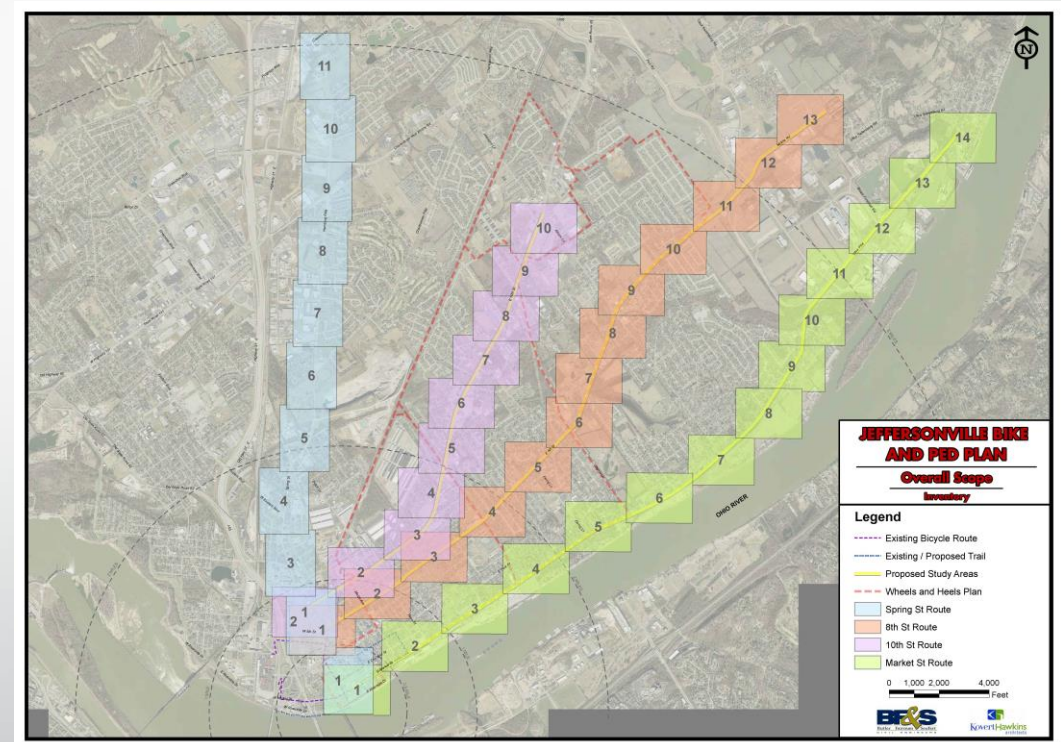
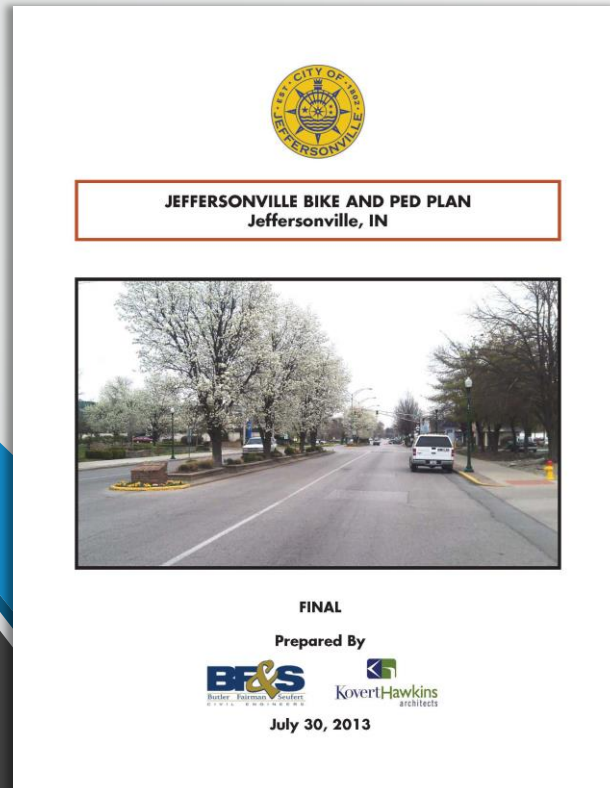
**Issue: Improve Connectivity to the rest of Jeffersonville**





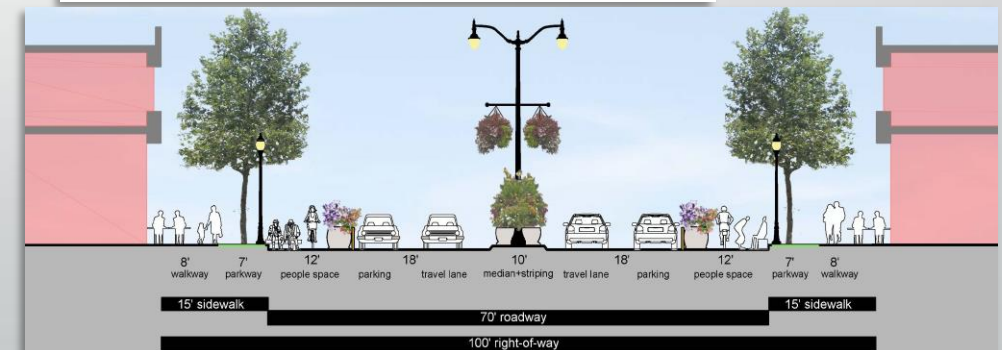
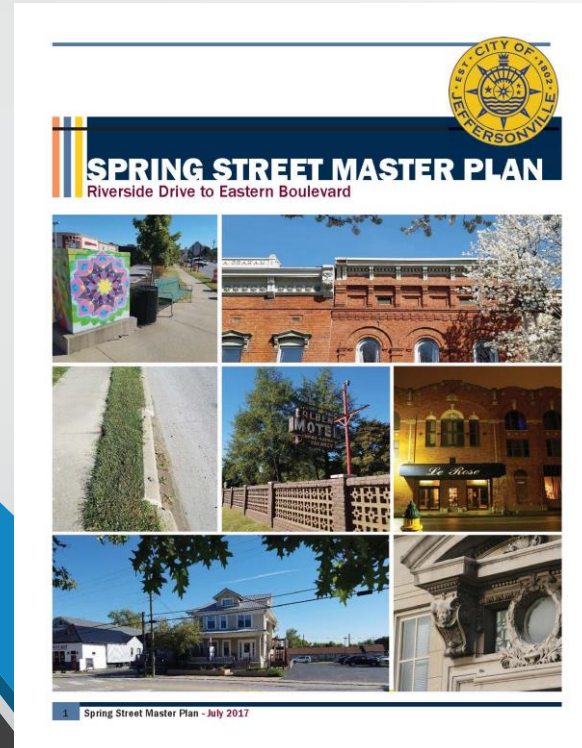
## 4. Jeffersonville: Moving Forward

- ❖ Jeffersonville Bike and Ped Plan – Completed in July 2013, Connections to the surrounding communities.



## 4. Jeffersonville: Moving Forward

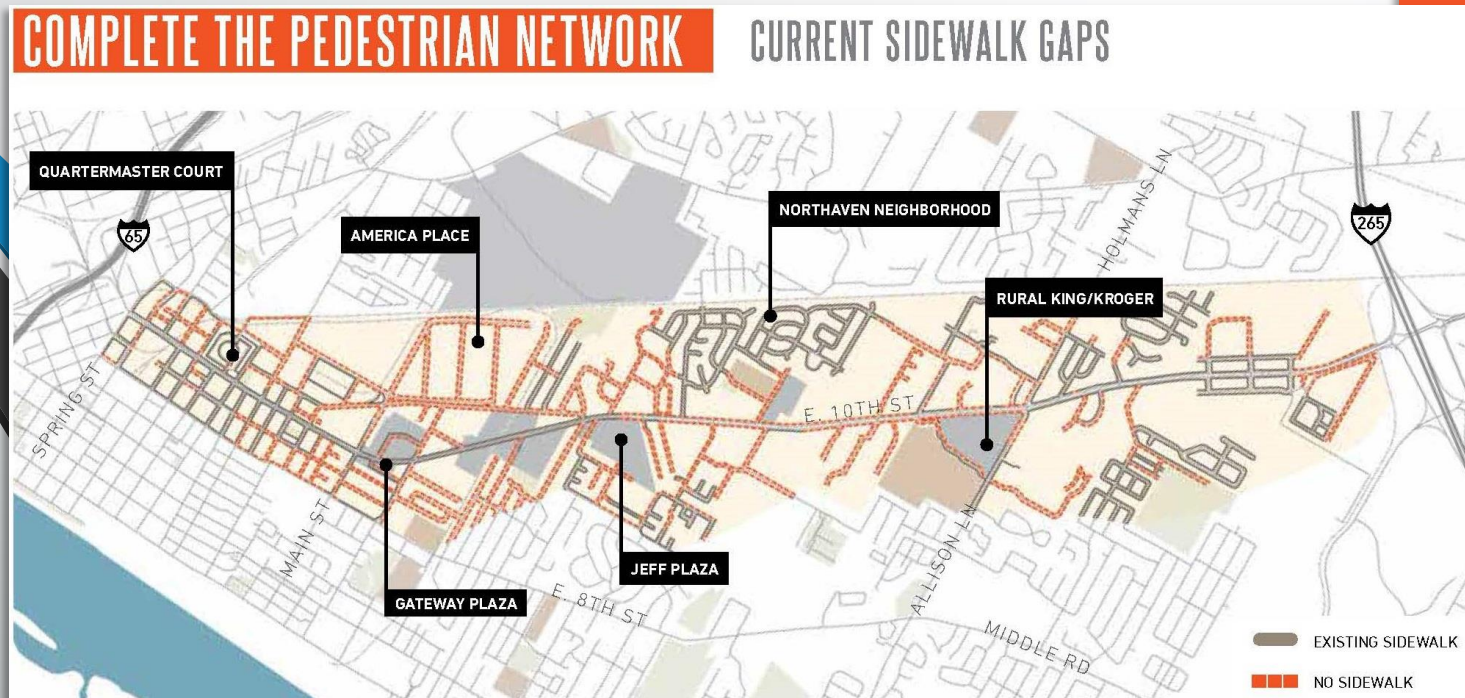
- ❖ Spring Street and Court Avenue – revitalization plans for both corridors to become more pedestrian friendly.





## 4. Jeffersonville: Moving Forward

❖ 10<sup>th</sup> Street Strategic Investment Plan – Completed April 2018,  
Vision for revitalizing 10<sup>th</sup> Street Corridor



### 10TH STREET STRATEGIC INVESTMENT PLAN

CITY OF JEFFERSONVILLE  
APRIL 30, 2018



- Main Street
- Nachand Lane
- Oakridge Drive
- Reeds Lane
- Sharon Drive
- Wall Street
- Walnut Street
- Woodland Court



## 5. Updating the Sidewalk Master Plan for 2019

### ❖ Approach:

What the Studies and Reports identified individually

Identify common threads or themes among them

Identify missing links or gaps

❖ Proposed projects from 2011 Master Plan that were not constructed or completed as proposed and how they fit with the approach.

❖ Identify proposed new projects.

❖ Prioritizing all projects.



## 5. Updating the Sidewalk Master Plan for 2019

- ❖ Claysburg Neighborhood Revitalization Plan: Improving connectivity
  - ❖ Thomas V. Bryant, Walnut Street, Wall Street, Watt Street, Bates-Bowyer Avenue
- ❖ Bike & Ped Plan: Primary Corridors
  - ❖ Middle Road, Utica Pike, 10th Street
  - ❖ Utica Pike
  - ❖ 10<sup>th</sup> Street



## 5. Updating the Sidewalk Master Plan for 2019

- ❖ **10<sup>th</sup> Street Strategic Investment Plan: Gaps and connections**
  - ❖ **10<sup>th</sup> Street gaps from Reeds Lane to Allison Lane/Holmans Lane**
  - ❖ **Connections to neighborhoods: Clairview Drive, Howard Avenue, Kehoe Lane, Nachand Lane, Reeds Lane, Woodland Road**
- ❖ **Spring Street, Court Avenue: Downtown Connections**
  - ❖ **Main Street, French Street, Howard Avenue (2011 Master Plan)**





## 5. Updating the Sidewalk Master Plan for 2019

- ❖ Connections to major thoroughfares:
  - ❖ Oak Park Boulevard from Allison Lane to Riverside Elementary
  - ❖ Bennett Avenue from Allison Lane to Pawnee Drive to Utica Pike
  - ❖ Springdale Drive, Kewanna Drive (both from 2011 Master Plan)
- ❖ Gateway Crossing and Bridgeport Commons: Connections to large commercial developments, Chapel Lake Park
  - ❖ Kerry Ann Way, New Chapel Road, Utica-Sellersburg Road
- ❖ Connections to Vissing Park and 10<sup>th</sup> Street commercial corridor:
  - ❖ Vissing Park Road (2011 Master Plan), Windmill Lane, Eastbrook Boulevard



## 6. Prioritizing Projects - Criteria

- ☐ Carry-over from 2011 Master Plan - included in Metrics score
- ☐ Costs – Estimated Costs, External Funding Sources
- ☐ Impact - Smart Growth metrics
  - ✓ Connection to major thoroughfare
  - ✓ Connection with future or proposed transportation infrastructure improvements
  - ✓ Connection to large residential areas
  - ✓ Pedestrian access to schools
  - ✓ Join missing link/sidewalk connections
  - ✓ Connections to business/commercial developments
  - ✓ Connection to recreation areas or parks
  - ✓ Proposed but not completed from 2011 Master Plan



## 6. Next Step: Public Input

